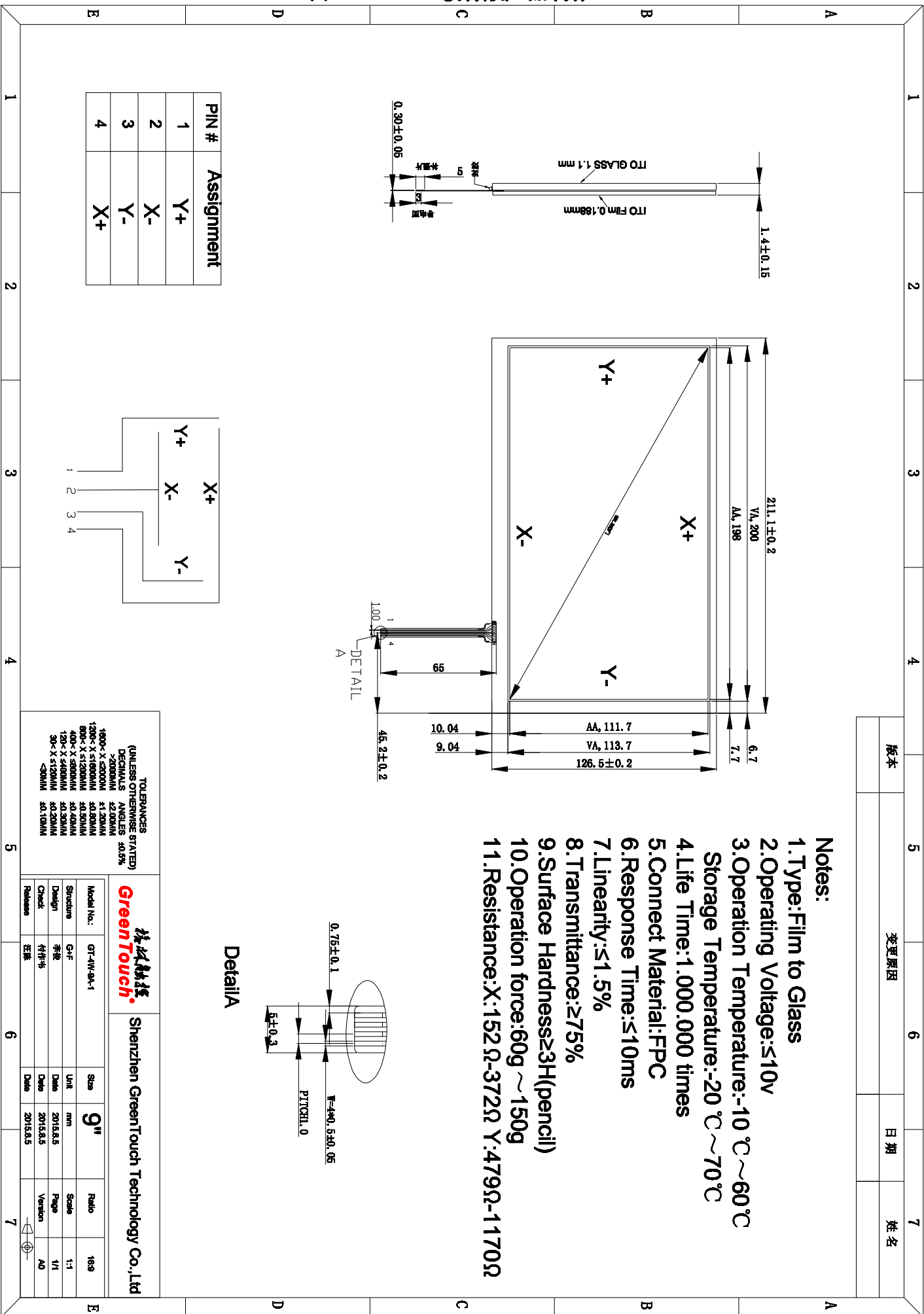


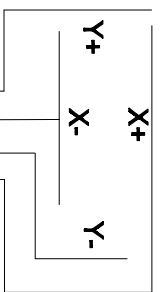
版本	变更原因	日期	姓名

Notes:

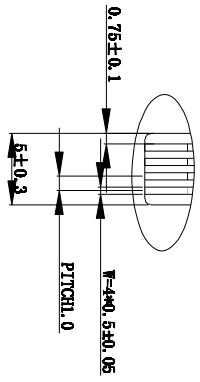
- 1.Type:Film to Glass
2. Operating Voltage:≤10V
3. Operation Temperature:-10℃~60℃
Storage Temperature:-20℃~70℃
4. Life Time:1,000,000 times
5. Connect Material:FPC
6. Response Time:≤10ms
7. Linearity:≤1.5%
8. Transmittance:≥75%
9. Surface Hardness≥3H(pencil)
10. Operation force:60g ~150g
11. Resistance:X:152Ω-372Ω Y:479Ω-1170Ω



PIN #	Assignment
1	Y+
2	X-
3	Y-
4	X+



DetailA



TOLERANCES
(UNLESS OTHERWISE STATED)
DECIMALS ANGLES ±0.5%

>200MM	±2.00MM
1600-X-≤200MM	±1.20MM
1200-X-≤1600MM	±0.80MM
800-X-≤1200MM	±0.50MM
400-X-≤800MM	±0.40MM
120-X-≤400MM	±0.20MM
30-X-≤120MM	±0.10MM
<30MM	±0.10MM

Model No.:	GT-4W-9A-1	Size	9" W	Ratio	16:9
Structure	G+F	Unit	mm	Scale	1:1
Design	李松	Date	2015.8.5	Page	1/1
Check	付作书	Date	2015.8.5	Version	A0
Release	王强	Date	2015.8.5		

绿城触控 Shenzhen GreenTouch Technology Co.,Ltd