



NEW ENERGY SOLUTION CATALOGUE
Product selection manual

PROMINENT TRADING (WENZHOU) CO., LTD.

MP: 86—13983212540

Email: sales@vcbbreaker.com

Whatsapp/Telegram: 86—13736779975

New energy solution:www.prominentcn.com

Medium&High voltage solution:www.vcbbreaker.com

Address:No.66 pu nan Road, Yueqing Economic Development Zone, Zhejiang, China



Website



COMPANY INTRODUCTION



-  Green energy
-  Industrial electricity
-  Rail traffic
-  Grid system

Prominent Trading (Wenzhou) Co., Ltd. located in Wenzhou Zhejiang, which is an international trading company with over 20 years of experience in low- and medium-voltage electrical equipment supply and solution delivery. We support customers across South America and Africa with dependable products, practical engineering solutions, and responsive service.

Building on our strong background in conventional power distribution, we have expanded into the new energy sector, providing flexible and application-driven solutions adapted to local grid conditions, project environments, and budget requirements.

Compared with manufacturers focused mainly on production, our core strength lies in customized solutions and project coordination. We carefully analyze each customer's technical needs, operating conditions, and project

objectives to deliver reliable, cost-effective, and easy-to-maintain solutions suitable for real-world operation. We are known for our fast response, clear communication, and strong service awareness. Our team is highly experienced in international trade procedures, ensuring smooth execution from inquiry to delivery, while maintaining strict quality control throughout supplier selection, production monitoring, inspection, and shipment.

For special or complex projects, we can dispatch experienced engineers to site for on-site surveys, technical guidance, installation support, and commissioning assistance when required.

With a strong sense of responsibility and flexibility, we are committed to building long-term, stable partnerships. Our mission is to provide customers with continuous technical and commercial support, and to act as a trusted solution partner in both power distribution and new energy projects.



PRODUCT CATALOG

Residential Solar & Storage Solutions

- 02 Household Electricity Diagram
- 03 PTDPO OffGrid Hybrid Inverter(EU Model)
- 06 PTDPO-U Off Grid Hybrid Inverter(US Model)
- 08 PTDPO-IP Off Grid Hybrid Inverter(Split)
- 10 PTPW Power Wall Lithium Energy Storage Battery
- 12 PTPV Vertical LFP Energy Storage Battery
- 14 PTBM-I Low Voltage Stacked Lithium Energy Storage Battery
- 17 PTBS-Rack/Cabinet Mounted Lithium Energy Storage Battery
- 19 PTBM-H High Voltage Stacked Lithium Energy Storage Battery
- 21 PTBS-H High Voltage Rack Lithium Energy Storage Battery
- 23 PTBT Plastic LFP Energy Storage Battery
- 25 PTIPT Energy Storage System Europe/US/Split phase model
- 27 PTIPL Energy Storage System Europe/Us/Split phase model
- 29 PTIPS Portable Power Station
- 31 PTIPI Portable Power Station
- 33 PTIPY All-in-One Balcony Solar Power System
- 35 PTPM SOC Power Manager

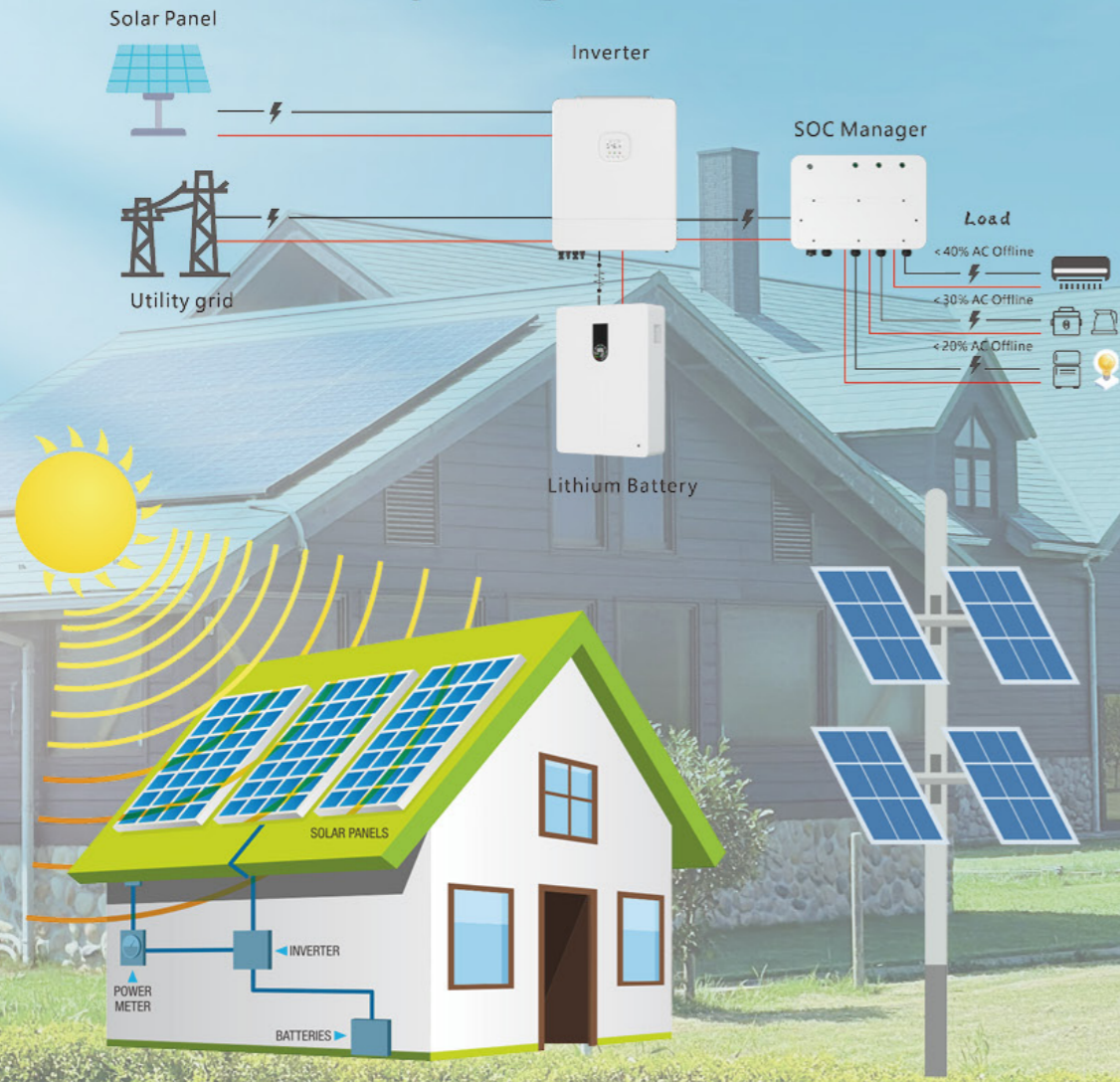
Smart C&I Energy Storage Solutions

- 36 PTBP Industrial & Commercial High Voltage Storage System
- 38 Grid Based System Solution
- 40 PTBP Industrial & Commercial High Voltage Storage System
- 42 Air Cooled Energy Storage System

Utility-Scale Energy Storage Systems





- 44 All-Nice System Solution
- 46 Prominent Power 5MWh Liquid-Cooled Battery Container
high yield over life cycle

Household Electricity Diagram



PTDPO Off Grid Hybrid Inverter(EU Model) 1-11 kW



- 
 Lithium communication
- 
 Photovoltaic+mains charging
- 
 Eight major protection functions
- 
 Pure sine wave output

Solar Panel

Solar panels absorb sunlight through semiconductor materials and convert light energy directly into direct current to power batteries or electrical devices

Inverter

Converts DC power into AC power for use by the load, off grid and on grid modes, automatically switch to off-grid power supply during power outage

Lithium battery

Store energy from PV or the power grid for use at night, on rainy days or during power outages, increasing household energy self-sufficiency

SOC manager

Real-time monitoring of battery power and intelligent management of priority switches for multiple loads

Load

Various appliances used in the Home

Product Introduction

The PTDPO off grid hybrid inverter combines photovoltaic and mains charging and discharging, UPS bypass, and battery inversion functions. It can intelligently adjust the work priority, communicate with home lithium batteries, and can also increase output power through multiple sets of parallel machines. It can be applied in different application scenarios such as homes, RV, agriculture, and industry.

Product features

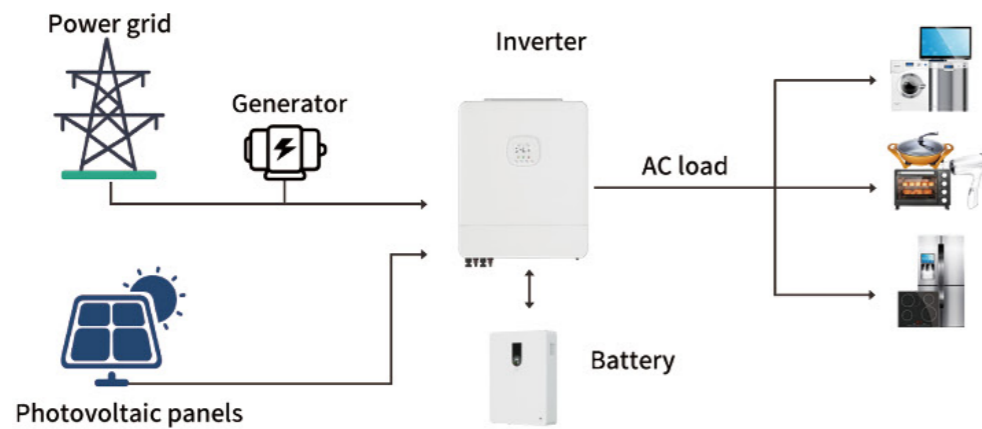
- ⊙ Advanced PTPWM technology. pure sine wave output
- ⊙ Automatic activation of lithium batteries
- ⊙ Four charging modes including photovoltaic, mains, photovoltaic priority, and hybrid charging
- ⊙ Advanced MPPT technology with an efficiency of up to 99.9%
- ⊙ Three output modes: photovoltaic, inverter, and mains bypass

PTDPO Off Grid Hybrid Inverter(EU Model)

1-11 kW



Product Connection Diagram



Product Parameters

| Model | PTDPO-1kW | PTDPO-1.5kW | PTDPO-3kW |
|--------------------------------|--|-------------|-----------|
| AC/Generator input | | | |
| Rated input voltage | 220/230/240 VAC | | |
| Voltage range | 90-280 VAC ± 3V (household appliance mode) 170-280 VAC ± 3V (UPS mode) | | |
| Frequency | 50/60Hz(adaptable) | | |
| Inverted output | | | |
| Rated power | 1000W | 1500W | 3000W |
| Output voltage | 220/230/240 VAC ± 5% | | |
| Waveform | Pure sinewave | | |
| Switching time(adjustable) | Computerequipment 10ms,household appliances 20ms | | |
| Peak power | 2000W | 3000W | 6000W |
| Battery | | | |
| Battery type | Lithium ion batteries/lead-acid batteries/user-defined | | |
| Rated batteryvoltage | 12 Vdc | 24 Vdc | 24 Vdc |
| B attery voltage range | 10~15.6V | 20~31V | 20~31V |
| PVinput | | | |
| PV charging method | MPPT | | |
| PV maximum input powe | 600W | 1200W | 5000W |
| Maximu m PVInput Current | 18A | 18A | 18A |
| MPPT trac king range | 20-150VDC | 30-150VDC | 60-500VDC |
| Maximum PVcharging current | 40A | 40A | 100A |
| Maximum AC charging current | 40A | 40A | 60A |
| Maximum total charging current | 80A | 80A | 100A |
| Basic parameters | | | |
| Communicationinterface | USB/RS485 (optional WiFi)/dry connector | | |
| Parallel interface | / | / | / |

PTDPO Off Grid Hybrid Inverter(EU Model)

1-11 kW



| Model | PTDPO-1kW | PTDPO-1.5kW | PTDPO-3kW |
|-------------------|-------------|-------------|-------------|
| Product size (mm) | 290*240*91 | 290*240*91 | 495*312*125 |
| Package size (mm) | 340*295*145 | 340*295*145 | 565*385*195 |
| NW. (kg) | 3.3 | 3.5 | 9.13 |
| GW. (kg) | 3.8 | 4.0 | 10.35 |

Product Parameters

| Model | PTDPO-4kW | PTDPO-6.2kW | PTDPO-11kW |
|--------------------------------|--|-------------|-------------|
| AC/Generator input | | | |
| Rated input voltage | 220/230/240 VAC | | |
| Voltage range | 90-280 VAC ± 3V (household appliance mode) 170-280 VAC ± 3V (UPS mode) | | |
| Frequency | 50/60Hz(adaptable) | | |
| Inverted output | | | |
| Rated power | 4000W | 6200W | 11000W |
| Output voltage | 220/230/240 VAC ± 5% | | |
| Waveform | Pure sinewave | | |
| Switching time(adjustable) | Computerequipment 10ms,household appliances 20ms | | |
| Peak power | 8000W | 12400W | 22000W |
| Battery | | | |
| Battery type | Lithium ion batteries/lead-acid batteries/user-defined | | |
| Rated batteryvoltage | 24 Vdc | 48 Vdc | |
| B attery voltage range | 10~15.6 Vdc | 40~60 Vdc | |
| PVinput | | | |
| PV charging method | MPPT | | |
| PV maximum input powe | 6500W | 8500W | 2×7500W |
| Maximu m PVInput Current | 27A | 27A | 27A |
| MPPT trac king range | 60-500VDC | 60-500VDC | 90-500VDC |
| Maximum PVcharging current | 120A | 120A | 150A |
| Maximum AC charging current | 100A | 100A | 150A |
| Maximum total charging current | 120A | 120A | 150A |
| Basic parameters | | | |
| Communicationinterface | USB/RS485 (optional WiFi)/dry connector | | |
| Parallel interface | Parallel function (optional) | | |
| Product size (mm) | 495*312*125 | 495*312*125 | 570*500*148 |
| Package size (mm) | 565*385*195 | 565*385*195 | 708*507*241 |
| NW. (kg) | 9.13 | 10.83 | 19.27 |
| GW. (kg) | 10.35 | 12.26 | 22.2 |

PTDPO-U Off Grid Hybrid Inverter(US Model) 3.6kW-6.5kW



Product Introduction

The PTDPO-U American standard off grid hybrid inverter combines photovoltaic and mains charging and discharging, UPS bypass, and battery inversion functions. It can intelligently adjust the work priority, communicate with home lithium batteries, and can also increase output power through multiple sets of parallel machines, which is suitable for different application scenarios in the Americas, such as homes, RV, agriculture, and industry.

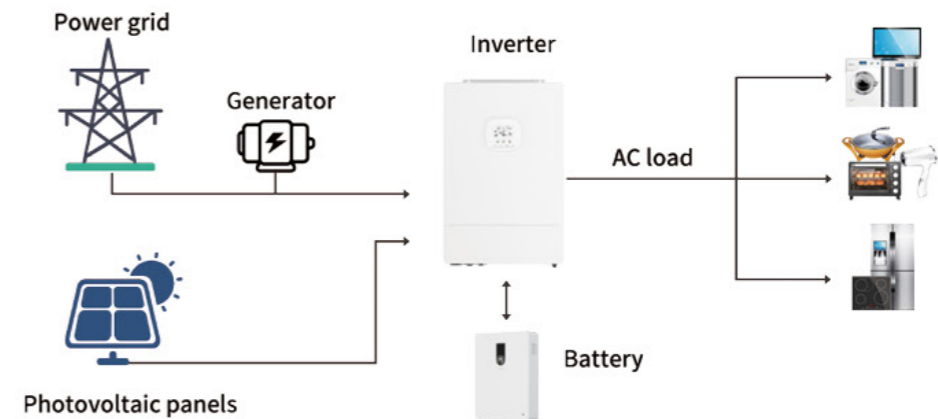
Product features

- Advanced PTPWM technology. pure sine wave output
- Automatic activation of lithium batteries
- Three output modes: photovoltaic, inverter, and mains bypass
- Four charging modes including photovoltaic, mains, photovoltaic priority, and hybrid charging
- Advanced MPPT technology with an efficiency of up to 99.9%

PTDPO-U Off Grid Hybrid Inverter(US Model) 3.6kW-6.5kW



Product Connection Diagram



Product Parameters

| Model | PTDPO-U-3.6kW | PTDPO-U-5kW | PTDPO-U-6.5kW |
|--------------------------------|--|---|---------------|
| AC/Generator input | | | |
| Rated input voltage | 120 VAC | | |
| Voltage range | (90Vac~140Vac) ±2% | | |
| Frequency | 50Hz±0.3Hz/60Hz±0.3HZ | | |
| Inverted output | | | |
| Rated power | 3600W | 5000W | 6500W |
| Output voltage | 120VAC ± 5% | | |
| Waveform | Pure sinewave | | |
| Switching time(adjustable) | Computerequipment 10ms,household appliances 20ms | | |
| Peak power | 7200W | 10000W | 12000W |
| Battery | | | |
| Battery type | Lithium ion batteries/lead-acid batteries/user-defined | | |
| Rated batteryvoltage | 48 Vdc | | |
| B attery voltage range | 40~60 Vdc | | |
| PVinput | | | |
| PV charging method | MPPT | | |
| PV maximum input powe | 4000W | 5500W | 2×4500W |
| Maximu m PVInput Current | 22A | 22A | 22A |
| MPPT trac king range | 80-300VDC | 120-450VDC | 80-300VDC |
| Maximum PVcharging current | 80A | 100A | 150A |
| Maximum AC charging current | 40A | 60A | 120A |
| Maximum total charging current | 80A | 100A | 150A |
| Basic parameters | | | |
| Communicationinterface | USB/RS485 (optional WiFi)/dry connector | | |
| Parallel interface | / | Maximum of 6 parallel machines (optional) | |
| Product size (mm) | 410*280*100 | 426*322*126 | 540*350*120 |
| Package size (mm) | 470*360*188 | 502*414*209 | 600*630*200 |
| NW. (kg) | 7.8 | 10.5 | 15 |
| GW. (kg) | 9.3 | 13.4 | 18 |

PTDPO-IP Off Grid Hybrid Inverter(Split) 7.2kW/10kW/12kW



Product Introduction

The PTDPO-IP Split phase standard off grid hybrid inverter combines photovoltaic and mains charging and discharging, UPS bypass, and battery inversion functions. It can intelligently adjust the work priority, communicate with home lithium batteries, and can also increase output power through multiple sets of parallel machines. It can output split phase 120V/240V voltage, which is suitable for different application scenarios in the Americas, such as homes, RV, agriculture, and industry

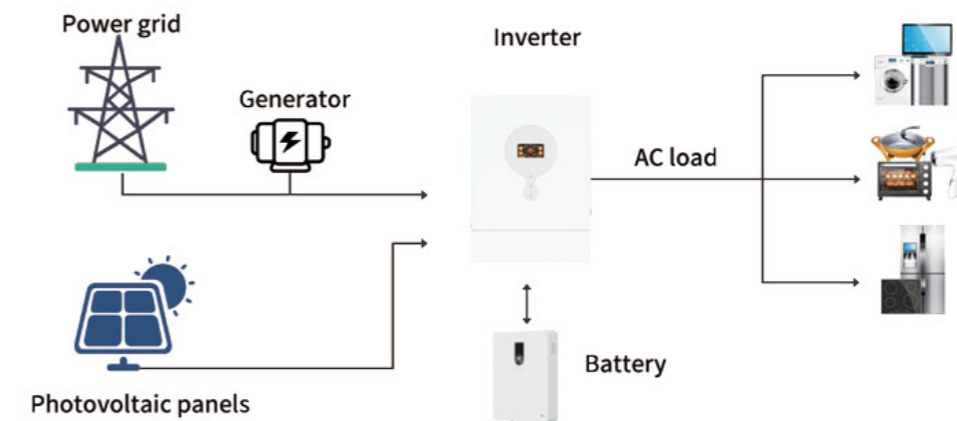
Product features

- Advanced PTPWM technology. pure sine wave output
- Automatic activation of lithium batteries
- Three output modes: photovoltaic, inverter, and mains bypass
- Four charging modes including photovoltaic, mains, photovoltaic priority, and hybrid charging
- Advanced MPPT technology with an efficiency of up to 99.9%

PTDPO-IP Off Grid Hybrid Inverter(Split) 7.2kW/10kW/12kW



Product Connection Diagram



Product Parameters

| Model | PTDPO-IP-7.2kW Spli | PTDPO-IP-10kW Spli | PTDPO-IP-12kW Spli |
|--------------------------------|--|--|--|
| AC/Generator input | | | |
| Rated input voltage | 120Vac(L1/N, L2/N)/240Vac(L1/L2) | | |
| Voltage range | (85Vac~140Vac)±2% | | |
| Frequency | 50Hz/60Hz (Auto detection) | | |
| Inverted output | | | |
| Rated power | Split phase 7200W;single phase 6000W(limited by thewiring terminals) | Split phase 1000W;single phase 7200W(imited by the wiring terminals) | Split phase 1200W;single phase 7200W(imited by the wiring terminals) |
| Output voltage | 120Vac(L1/N, L2/N)/240Vac(L1/L2) | | |
| Waveform | Pure sine wave | | |
| Switching time(adjustable) | 10ms (typical) | | |
| Peak power | | | |
| Battery | | | |
| Battery type | Lithium ion batteries/lead-acid batteries/user-defined | | |
| Rated batteryvoltage | 48 Vdc | | |
| B attery voltage range | 40~60 Vdc | | |
| PVinput | | | |
| PV charging method | MPPT | | |
| PV maximum input powe | 4000W | 5500W | 2×4500W |
| Maximu m PVInput Current | 22A | 22A | 22A |
| MPPT trac king range | 80-300VDC | 120-450VDC | 80-300VDC |
| Maximum PVcharging current | 80A | 100A | 150A |
| Maximum AC charging current | 40A | 60A | 120A |
| Maximum total charging current | 80A | 100A | 150A |
| Basic parameters | | | |
| Communicationinterface | USB/RS485 (optional WiFi)/dry connector | | |
| Parallel interface | / | Maximum of 6 parallel machines (optional) | |
| Product size (mm) | 410*280*100 | 426*322*126 | 540*350*120 |
| Package size (mm) | 470*360*188 | 502*414*209 | 600*630*200 |
| NW. (kg) | 7.8 | 10.5 | 15 |
| GW. (kg) | 9.3 | 13.4 | 18 |

PTPW Power Wall Lithium Energy Storage Battery

48V/51.2V 100Ah/200Ah/300Ah



Product Introduction

The PTPW Power Wall lithium energy storage battery, uses high cycle lithium iron phosphate cells, which are more convenient and aesthetically pleasing to install. The high-performance BMS protection and management battery system has a wider range of use and longer lifespan than traditional batteries.

Using SUG's exclusive color screen design, you can check the battery's operation status quickly and conveniently.

Product features

- ◎ Grade A LiFePO4 cell
- ◎ Parallel support for 15PCS
- ◎ Compatible with multiple inverter brands
- ◎ 6000 cycles @ DOD80%
- ◎ Bluetooth/WIFI optional
- ◎ BMS 100A/150A/200A optional
- ◎ LCD color display screen

PTPW Power Wall Lithium Energy Storage Battery

48V/51.2V 100Ah/200Ah/300Ah



Application Area

- ◎ Energy storage system, control system, alarm system, power system, database
- ◎ Emergency lighting system, emergency power supply, UPS
- ◎ Telecommunications, communication, and fire protection

Product Parameters

| Model | PTPW-48100 | PTPW-48200 | PTPW-48300 | PTPW-51.2100 | PTPW-51.2200 | PTPW-51.2300 |
|---------------------------------|--|-------------|-------------|--------------|--------------|--------------|
| Standard voltage | 48V | 48V | 48V | 51.2V | 51.2V | 51.2V |
| Standard capacity | 100Ah | 200Ah | 300Ah | 100Ah | 200Ah | 300Ah |
| Rated capacity | 4.8kWh | 9.6kWh | 14.4kWh | 5.12kWh | 10.24kWh | 15.36kWh |
| Working voltage | 40.5-54V | | | 43.2-57.6V | | |
| Standard charging current | 50A | 100A | 150A | 50A | 100A | 150A |
| Standard discharging current | 100A | 100A | 200A | 100A | 100A | 200A |
| Suggested DOD | 80% | | | | | |
| Cycle life | >6000 cycles | | | | | |
| IP Rating | IP21(IP65 optional) | | | | | |
| Discharge operating temperature | -20°C-60°C | | | | | |
| Charging operating temperature | 0°C-45°C | | | | | |
| Maximum parallel | 15PCS | | | | | |
| Communication | RS232/CAN/RS485 (WIFI/BT optional) | | | | | |
| Display | LCD color screen/LCD touch screen (optional) | | | | | |
| Warranty | 5 Years | | | | | |
| Certificate | UN38.3/MSDS/CE/ROHS/FCC | | | | | |
| NW.(kg) | 47.3 | 90.4 | 118.1 | 47.3 | 90.4 | 118.1 |
| GW.(kg) | 56 | 111.1 | 139.1 | 56 | 111.1 | 139.1 |
| Product size (mm) | 630*405*160 | 820*555*200 | 790*530*268 | 630*405*160 | 820*555*200 | 790*530*268 |
| Package size (mm) | 730*510*305 | 920*655*415 | 900*630*480 | 730*510*305 | 920*655*415 | 900*630*480 |

PTPV Vertical LFP Energy Storage Battery

51.2V-280Ah/314Ah/560Ah/628Ah



BMS protection

Pulley design

Home energy storage

Intelligent communication

Product Introduction

The PTPV Power Wall lithium energy storage battery, uses high cycle lithium iron phosphate cells, which are more convenient and aesthetically pleasing to install. The high-performance BMS protection and management battery system has a wider range of use and longer lifespan than traditional batteries.

Using SUG's exclusive color screen design, you can check the battery's operation status quickly and conveniently.

Product features

- ◎ Grade A LiFePO4 cell
- ◎ Parallel support for 15PCS
- ◎ Compatible with multiple inverter brands
- ◎ 6000 cycles @ DOD80%
- ◎ Bluetooth/WIFI optional
- ◎ LCD color display screen
- ◎ BMS 200A

PTPV Vertical LFP Energy Storage Battery

51.2V-280Ah/314Ah/560Ah/628Ah



Application Area

- ◎ Energy storage system, control system, alarm system, power system, database
- ◎ Emergency lighting system, emergency power supply, UPS
- ◎ Telecommunications, communication, and fire protection

Product Parameters

| Model | PTPV-51.2280 | PTPV-51.2314 | PTPV-51.2560 | PTPV-51.2628 |
|---------------------------------|---|--------------|--------------|--------------|
| Standard voltage | 51.2V | 51.2V | 51.2V | 51.2V |
| Standard capacity | 280Ah | 314Ah | 560Ah | 628Ah |
| Rated capacity | 14.33kWh | 6.07kWh | 28.67kWh | 32.15kWh |
| Working voltage | 43.2-57.6V | | | |
| Standard charging current | 200A | | | |
| Standard discharging current | 200A | | | |
| Suggested DOD | 80% | | | |
| Cycle life | >6000 cycles | | | |
| IP Rating | IP21(IP65 optional) | | | |
| Discharge operating temperature | -20°C-50°C | | | |
| Charging operating temperature | 0°C-45°C | | | |
| Maximum parallel | 15PCS | | | |
| Communication | RS232/CAN/RS485 (WIFI/BT optional) | | | |
| Display | LCD color screen/LCD touch screen(optional) | | | |
| Warranty | 5 Years | | | |
| Certificate | UN38.3/MSDS/CE/ROHS/FCC | | | |
| NW.(kg) | 123.1 | 126.2 | 227 | 235.2 |
| GW.(kg) | 145.1 | 145.9 | 252 | 260.5 |
| Product size (mm) | 860*550*270 | 860*550*270 | 872*530*530 | 872*530*530 |
| Package size (mm) | 940*630*460 | 940*630*460 | 985*640*740 | 985*640*740 |

PTBM-I Low Voltage Stacked Lithium Energy Storage Battery

Inverter output: 5.5kw/10kW
Number of battery modules: 51.2V 100Ah



Product Introduction

The PTBM-I Stacked lithium-ion energy storage system uses high cycle lithium iron phosphate cells, and a high-performance BMS protection and management battery system. A single group can be stacked up to 7 layers (including the inverter layer), and multiple groups can be combined into up to 15 battery modules in parallel. The capacity can be freely combined, and when paired with a 5.5KW-10KW off grid photovoltaic inverter system, it can meet various electricity needs of households and industries.

Product features

- Grade A LiFePO4 cell
- Bluetooth and WIFI/touch LCD screen optional
- 100A BMS for charging/discharging
- 6000 cycles @DOD80%
- LCD display screen
- Parallel support for 15PCS

PTBM-I Low Voltage Stacked Lithium Energy Storage Battery

Inverter output: 5.5kw/10kW
Number of battery modules: 51.2V 100Ah

Application Area

- Energy storage system, control system, alarm system, power system, database
- Emergency lighting system, emergency power supply, UPS
- Telecommunications, communication, and fire protection

Product Parameters

| Model | PTBM-I-51.2100 | PTBM-I-51.2100*2 | PTBM-I-51.2100*3 | PTBM-I-51.2100*4 | PTBM-I-51.2100*5 | PTBM-I-51.2100*6 |
|---------------------------------|---|---|---|------------------------------------|------------------------------------|------------------------------------|
| Standard voltage | 51.2V | | | | | |
| Standard capacity | 100Ah | 100Ah | 100Ah | 100Ah | 100Ah | 100Ah |
| Rated capacity | 5.12kWh | 5.12kWh*2 | 5.12kWh*3 | 5.12kWh*4 | 5.12kWh*5 | 5.12kWh*6 |
| Working voltage | 43.2-57.6V | | | | | |
| Standard charging current | 50A | 50A*2 | 50A*3 | 50A*4 | 50A*5 | 50A*6 |
| Standard discharging current | 100A | 100A*2 | 100A*3 | 100A*4 | 100A*5 | 100A*6 |
| Suggested DOD | 80% | | | | | |
| Cycle life | >6000 cycles | | | | | |
| IP Rating | IP21 | | | | | |
| Discharge operating temperature | -20°C-50°C | | | | | |
| Charging operating temperature | 0°C-45°C | | | | | |
| Maximum parallel | 15PCS | | | | | |
| Communication | RS232/CAN/RS485 (WIFI/BT optional) | | | | | |
| Display | LCD display screen | | | | | |
| Warranty | 5 Years | | | | | |
| Certificate | UN38.3/MSDS/CE/ROHS/FCC | | | | | |
| NW.(kg) | 45.1+10.5(base) | 45.1*2+10.5(base) | 45.1*3+10.5(base) | 45.1*4+10.5(base) | 45.1*5+10.5(base) | 45.1*6+10.5(base) |
| GW.(kg) | 53.3+15(base) | 53.3*2+15(base) | 53.3*3+15(base) | 53.3*4+15(base) | 53.3*5+15(base) | 53.3*6+15(base) |
| Product size (mm) | 550*500*(171+105) 550*210*530 (ultra thin version) | 550*500*(171*2+105) 550*210*1000 (Ultra thin version) | 550*500*(171*3+105) 550*210*1470 (Ultra thin version) | 550*500*(171*4+105) | 550*500*(171*5+105) | 550*500*(171*6+105) |
| Package size (mm) | 650*600*290 650*600*210(base) 545*510*300 (Ultra thin version) | 650*600*290*2 650*600*210(base) 545*510*300*2 (Ultra thin version) | 650*600*290*3 650*600*210(base) 545*510*300*3 (Ultra thin version) | 650*600*290*4 650*600*210(base) | 650*600*290*5 650*600*210(base) | 650*600*290*6 650*600*210(base) |

PTBM-I Low Voltage Stacked Lithium Energy Storage Battery

Inverter output: 5.5kw/10kW

Number of battery modules: 51.2V 100Ah



Inverter parameters

| Rated power | 5.5kW | 10kW |
|---|---|---|
| AC input | | |
| Voltage | 230VAC | |
| Optional voltage range | 170-280vAC (personal computer):90-280vAC (household appliances) | |
| Frequency range | 50Hz/60Hz (adaptive) | |
| AC output | | |
| Rated voltage | 230VAC±5% | |
| Peak power | 11000VA | 20000VA |
| Efficiency | max 93.5% | max 98% |
| Transfer time | 10ms (personal computer) 20ms (household appliances) | |
| Waveform | Pure sine wave | |
| Battery | | |
| Battery voltage | 48VDC | |
| Floating charging voltage | 54VDC (Settable) | |
| Overcharge protection | 57.6VDC(Settable) | |
| Solar charging & AC charging | | |
| PV maximum open circuit voltage | 500VDC | |
| PV maximum power | 5500W | 11000W |
| MPPT range @ working voltage | 120-500VDC | 90-500VDC |
| Maximum solar charging current | 100A | 150A |
| Maximum AC charging current | 60A | 150A |
| Maximum charging current | 100A | 150A |
| Basic parameters | | |
| Working temperature | -10°C-50°C | |
| Working humidity | 20%-95% relative temperature (non condensing) | |
| Storage temperature | -15°C-60°C | |
| NW.(kg) | 19.6 | 30.1 |
| GW.(Kkg) | 24.1 | 34.6 |
| Product size (mm) | 550*500*156(Regular style) 550*210*470(Ultra thin style) | 550*500*245(Regular style) 550*210*470(Ultra thin style) |
| Package size(mm) | 650*600*290 | 650*600*350 |

PTBS-Rack/Cabinet Mounted Lithium Energy Storage Battery

48V/51.2V100AH/200Ah/300Ah



Product Introduction

The PTBS- Rack/Cabinet mounted lithium energy storage battery, uses high cycle lithium iron phosphate cells, high-performance BMS protection and management battery system, and can be combined into up to 15 battery modules in parallel. The capacity can be freely combined to meet various needs of households and industries. into up to 15 battery modules in parallel.

Product features

- ◎ Grade ALiFePO4 cell
- ◎ Parallel support for 15PCS
- ◎ Compawmultipleinverterb
- ◎ 6000 cycles @ DOD80%
- ◎ Bluetooth/WIFI optional
- ◎ LCD display screen (touch screen optional)
- ◎ BMS 100A/150A/200A optional

PTBS-Rack/Cabinet Mounted Lithium Energy Storage Battery 48V/51.2V100AH/200Ah/300Ah



Application Area

- ◎ Energy storage system, control system, alarm system, power system, database
- ◎ Emergency lighting system, emergency power supply, UPS
- ◎ Telecommunications, communication, and fire protection

Product Parameters

| Model | PTBS-48100 | PTBS-48200 | PTBS-48300 | PTBS-51.2100 | PTBS-51.2200 | PTBS-51.2300 |
|---------------------------------|------------------------------------|-------------|-------------|--------------|--------------|--------------|
| Standard voltage | 48V | 48V | 48V | 51.2V | 51.2V | 51.2V |
| Standard capacity | 100Ah | 200Ah | 300Ah | 100Ah | 200Ah | 300Ah |
| Rated capacity | 4.8kWh | 9.6kWh | 14.4kWh | 5.12kWh | 10.24kWh | 15.36kWh |
| Working voltage | 40.5-54V | | | 43.2-57.6V | | |
| Standard charging current | 50A | 100A | 150A | 50A | 100A | 150A |
| Standard discharging current | 100A | 100A | 200A | 100A | 100A | 200A |
| Suggested DOD | 80% | | | | | |
| Cycle life | >6000 cycles | | | | | |
| IP Rating | IP21 | | | | | |
| Discharge operating temperature | -20°C-50°C | | | | | |
| Charging operating temperature | 0°C-45°C | | | | | |
| Maximum parallel | 15PCS | | | | | |
| Communication | RS232/CAN/RS485 (WIFI/BT optional) | | | | | |
| Display | LCD display screen | | | | | |
| Warranty | 5 Years | | | | | |
| Certificate | UN38.3/MSDS/CE/ROHS/FCC | | | | | |
| NW.(kg) | 40.7 | 75.6 | 107.2 | 40.7 | 75.6 | 107.2 |
| GW.(kg) | 47.1 | 91.1 | 123.8 | 47.1 | 91.1 | 123.8 |
| Product size (mm) | 425*484*165 | 773*560*165 | 750*484*240 | 425*484*165 | 773*560*165 | 750*484*240 |
| Package size (mm) | 540*540*290 | 900*620*340 | 875*555*460 | 540*540*290 | 900*620*340 | 875*555*460 |

PTBM-H High Voltage Stacked Lithium Energy Storage Battery Number of battery modules:102.4V 50Ah



Product Introduction

The PTBM-H High voltages stacked lithium energy storage battery, uses high cycle lithium iron phosphate cells, a high-performance BMS protection and management battery system, and can stack up to 7 modules per group (including the BMS main control layer). Multiple groups can be freely combined to achieve 2-8 battery modules in series, meeting various needs of households and industries.

Product features

- ◎ Grade A LiFePO4 cell
- ◎ Supports up to 8 modules in series
- ◎ High voltage BMS control system
- ◎ 6000 cycles @ DOD80%
- ◎ Convenient to move and freely combine

PTBM-H High Voltage Stacked Lithium Energy Storage Battery

Number of battery modules:102.4V 50Ah



Application Area

- ◎ Energy storage system, control system, alarm system, power system, database
- ◎ Emergency lighting system, emergency power supply, UPS
- ◎ Telecommunications, communication, and fire protection

Product Parameters

| Model | PTBM-H-10.24kWh | PTBM-H-15.36kWh | PTBM-H-20.48kWh | PTBM-H-25.6kWh | PTBM-H-30.72kWh |
|---------------------------------|---|------------------------------------|------------------------------------|------------------------------------|------------------------------------|
| Standard voltage | 102.4V | | | | |
| Number of modules | 1+2/PCS | 1+3/PCS | 1+4/PCS | 1+5/PCS | 1+6/PCS |
| Single module capacity | 50Ah | 50Ah | 50Ah | 50Ah | 50Ah |
| Rated capacity | 5.112kWh*2 | 5.112kWh*3 | 5.112kWh*4 | 5.112kWh*5 | 5.112kWh*6 |
| Working voltage | 172.8-230.4V | 259.2-348.8V | 345.6-464V | 432-579.2V | 518.4-464.4V |
| Standard charging current | 25A/module | | | | |
| Standard discharging current | 50A/module | | | | |
| Suggested DOD | 80% | | | | |
| Cycle life | >6000 cycles | | | | |
| IP Rating | IP21 | | | | |
| Discharge operating temperature | -20°C-60°C | | | | |
| Charging operating temperature | 0°C-45°C | | | | |
| Maximum series connection | 8PCS | | | | |
| Communication | CAN/RS485(WiFi/Bluetooth optional) | | | | |
| Warranty | 5 Years | | | | |
| Certificate | UN38.3/MSDS/CE/ROHS/FCC | | | | |
| NW.(kg) | 54*2+14.2(base) 106 (Ultra thin version) | 54*3+14.2(base) | 54*4+14.2(base) | 54*5+14.2(base) | 54*6+14.2(base) |
| GW.(kg) | 64*2+18.7(base) 124 (Ultra thin version) | 64*3+18.7(base) | 64*4+18.7(base) | 64*5+18.7(base) | 64*6+18.7(base) |
| Product size (mm) | 550*500*(178*3+105 550*210*1470 (Ultra thin version) | 50*500*(178*4+105) | 50*500*(178*5+105) | 50*500*(178*6+105) | 50*500*(178*7+105) |
| Package size(mm) | 630*580*252(base) 650*600*290*3 545*510*300*3 (Ultra thin version) | 650*600*290*4 630*580*252(base) | 650*600*290*5 630*580*252(base) | 650*600*290*6 630*580*252(base) | 650*600*290*7 630*580*252(base) |

PTBS-H High Voltage Rack Lithium Energy Storage Battery

Number of battery modules:102.4V 100Ah



Product Introduction

The PTBS-H High voltage rack lithium energy storage battery, uses high cycle lithium iron phosphate cells, a high-performance BMS protection and management battery system, and can be connected in series with multiple groups to achieve 2-8 battery modules. It has a high-strength sheet metal box protection and can be equipped with air conditioning cooling to increase safety performance and meet various needs of households and industries.

Product features

- ◎ Grade A LiFePO4 cell
- ◎ Supports up to 8 modules in series
- ◎ 6000 cycles @ DOD80%
- ◎ High voltage BMS control system
- ◎ Convenient to move and freely combine

PTBS-H High Voltage Rack Lithium Energy Storage Battery

Number of battery modules:102.4V 100Ah



Application Area

- ◎ Energy storage system, control system, alarm system, power system, database
- ◎ Emergency lighting system, emergency power supply, UPS
- ◎ Telecommunications, communication, and fire protection

Product Parameters

| Model | PTBS-H-20.48kWh | PTBS-H-30.72kWh | PTBS-H-40.96kWh | PTBS-H-51.2kWh | PTBS-H-61.44kWh |
|---------------------------------|------------------------------------|-----------------|-----------------|----------------|-----------------|
| Standard voltage | 102.4V | | | | |
| Number of modules | 1+2/PCS | 1+3/PCS | 1+4/PCS | 1+5/PCS | 1+6/PCS |
| Single module capacity | 100Ah | 100Ah | 100Ah | 100Ah | 100Ah |
| Rated capacity | 10.24kWh*2 | 10.24kWh*3 | 10.24kWh*4 | 10.24kWh*5 | 10.24kWh*6 |
| Working voltage | 172.8-230.4V | 259.2-348.8V | 345.6-464V | 432-579.2V | 604..8-809.6V |
| Standard charging current | 50A/module | | | | |
| Standard discharging current | 100A/module | | | | |
| Suggested DOD | 80% | | | | |
| Cycle life | >6000 cycles | | | | |
| IP Rating | IP20 | | | | |
| Discharge operating temperature | -20°C-50°C | | | | |
| Charging operating temperature | 0°C-45°C | | | | |
| Maximum series connection | 8PCS | | | | |
| Communication | CAN/RS485(WiFi/Bluetooth optional) | | | | |
| Warranty | 5 Years | | | | |
| Certificate | UN38.3/MSDS/CE/ROHS/FCC | | | | |
| NW.(kg) | 90*2+17(BMS) | 90*3+17(BMS) | 90*4+17(BMS) | 90*5+17(BMS) | 90*6+17(BMS) |
| GW.(kg) | 105*2+25(BMS) | 105*3+25(BMS) | 105*4+25(BMS) | 105*5+25(BMS) | 105*6+25(BMS) |
| Product size (mm) | 790*480*178*3 | 790*480*178*4 | 790*480*178*5 | 790*480*178*6 | 790*480*178*7 |
| Package size(mm) | 870*610*410*3 | 870*610*410*4 | 870*610*410*5 | 870*610*410*6 | 870*610*410*7 |

PTBT Plastic LFP Energy Storage Battery



12.8V/25.6V 100Ah/150Ah/200Ah/300Ah/400Ah



Product Introduction

PTBT Plastic LFP Energy Storage Battery use long working life LiFePO4 battery, and high performance BMS to protect and manage the battery system, it has wider usage and longer life than traditional battery.

Product features

- ◎ LiFePO4 cell class A
- ◎ 50A/100A/150A/200A BMS for charge/discharge
- ◎ 6000 cycle times@DoD80%
- ◎ IP67 design
- ◎ BT is optional
- ◎ With series/parallel function
- ◎ LCD display is optional

PTBT Plastic LFP Energy Storage Battery

12.8V/25.6V 100Ah/150Ah/200Ah/300Ah/400Ah



Application Area

- ◎ Energy storage system, control system, alarm system, power system, database
- ◎ Emergency lighting system, emergency power supply, UPS
- ◎ Telecommunications, communication, and fire protection

Product Parameters

| Model | PTBT-12.8100 | PTBT-12.8150 | PTBT-12.8200 | PTBT-12.8300 | PTBT-12.8400 | PTBT-25.6100 | PTBT-25.6200 |
|-------------------------------------|-------------------------|--------------|--------------|--------------|--------------|--------------|--------------|
| Standard voltage | 12.8V | 12.8V | 12.8V | 12.8V | 12.8V | 25.6V | 25.6V |
| Standard capacity | 100Ah | 150Ah | 200Ah | 300Ah | 400Ah | 100Ah | 200Ah |
| Standard energy | 1.28kWh | 1.92kWh | 2.56kWh | 3.84kWh | 5.12kWh | 2.56kWh | 5.12kWh |
| Working voltage | 10-14.6V | 10-14.6V | 10-14.6V | 10-14.6V | 10-14.6V | 20-29.2V | 20-29.2 |
| Standard charging current | 50A | 50A | 50A | 100A | 100A | 500A | 50A |
| Standard discharging current | 100A | 100A | 100A | 200A | 200A | 100A | 100A |
| Suggested DOD | 80% | | | | | | |
| Cycle life | >6000 cycles | | | | | | |
| IP Rating | Ip67 | | | | | | |
| Operating temperature for discharge | -20°C-60°C | | | | | | |
| Operating temperature for charge | 0°C-45°C | | | | | | |
| Communication | BT optional | | | | | | |
| Display | LCD display optional | | | | | | |
| Warranty | 5 years | | | | | | |
| Certificate | UN38.3/MSDS/CE/ROHS/FCC | | | | | | |
| NW.(kg) | 9.1 | 15 | 17.6 | 30 | 36.4 | 17.6 | 36.4 |
| GW.(kg) | 12.2 | 20 | 22 | 35 | 43.5 | 22 | 43.5 |
| Product size(mm) | 256*165*210 | 532*207*215 | 532*207*215 | 520*267*220 | 440*388*154 | 532*207*215 | 440*388*154 |
| Package size(mm) | 390*235*310 | 600*275*295 | 600*275*295 | 567*309*207 | 540*540*290 | 600*275*295 | 540*540*290 |

PTIPT Energy Storage System Europe/US/Split phase model

5kW/6kW 5kWh



Product Introduction

PTIPT energy storage system is one of a series of industrial energy storage products designed and developed independently. Long cycle life, high safety standard BMS software protection, sturdy shell, beautiful appearance, easy installation and use, etc. Widely used in various energy storage systems.

Product features

- ◎ The module is non-toxic, non-polluting and environmentally friendly.
- ◎ Cathode material is made from LiFePO4 with safety performance and long cycle life.
- ◎ Battery management system (BMS) has protection functions including over-discharge, over-charge, over-current and high/low temperature.
- ◎ The system can automatically manage charge and discharge state and balance voltage of each cell.
- ◎ Adopted self-cooling mode rapidly reduced system entire noise.
- ◎ The module has less self-discharge, up to 6 months without charging it on shelf, no memory effect, excellent performance of shallow charge and discharge.
- ◎ Multi-functional LED intelligent digital screen display.

Product Parameters

| Model | PTIPT-U 5KW 5kWh | PTIPT-1 6KW 5kWh | PTIPT-E 5KW 5kWh |
|------------------------------|-------------------------|-------------------------|---------------------------|
| Battery parameters | | | |
| Module model | 51.2V100Ah | 51.2V100Ah | 51.2V100Ah |
| Battery type | Lifepo4 | Lifepo4 | Lifepo4 |
| Nominal capacity | 5.12kWh | 5.12kWh | 5.12kWh |
| Nominal voltage | 51.2V | 51.2V | 51.2V |
| Working voltage | 43.2-58.4V | 43.2-58.4V | 43.2-58.4V |
| PV input | | | |
| PVarray mppt voltage range | 120V-500V | 12-30V/30V-150V | 120V-500V |
| Maximum solar charge Current | 100A | 10A/30A | 100A |
| AC input | | | |
| Voltage | 120VAC | 120VAC/240VAC | 220VAC |
| AC input current | 100A | 15A/10A | 100A |
| AC output | | | |
| AC output | 120V 41.6A | 120V20A/120V30A/240V30A | 220V 22.7A |
| DC output | | | |
| DC output | 1 | 12V30A/5521x2(12V10A) | 12V30A/5521x2(12V10A) |
| Type-c | 1 | PD 100Wx1/30Wx1 | PD 100Wx1/30Wx1 |
| USB | 1 | QC3.0 | QC3.0 |
| Overall parameters | | | |
| Communication | RS485,WIFI,RS232 | RS485,BT,RS232 | RS485,BT,RS232 |
| Storage temperature | -20°C~55°C | -20°C~55°C | -20°C~55°C |
| Working humidity | <95%(RH) | <95%(RH) | <95%(RH) |
| Working temperature | -10°C~40°C | -10°C~40°C | -10°C~40°C |
| Working altitude | ≤200m | <2000m | <2000m |
| Cooling method | fan | fan | fan |
| Protective class | IP20 | IP20 | IP20 |
| Weight | 80kg | 80kg | 80kg |
| Dimension | 550x285(315)x850(995)mm | 550x285(315)x850(995)mm | 590x290(320)x1000(1160)mm |
| Design life | 10 years(25°C) | 10 years(25°C) | 10 years(25°C) |
| Cycle life | >6000(25°C),80%DOD | >6000(25°C),80%DOD | >6000(25°C),80%DOD |



Product Introduction

PTIPL energy storage system is one of a series of industrial energy storage products designed and developed independently. Long cycle life, high safety standard BMS software protection, sturdy shell, beautiful appearance, easy installation and use, etc. Widely used in various energy storage systems.

Product features

- ◎ The module is non-toxic, non-polluting and environmentally friendly.
- ◎ Cathode material is made from LiFePO4 with safety performance and long cycle life.
- ◎ Battery management system (BMS) has protection functions including over-discharge, over-charge, over-current and high/low temperature.
- ◎ The system can automatically manage charge and discharge state and balance voltage of each cell.
- ◎ Adopted self-cooling mode rapidly reduced system entire noise.
- ◎ The module has less self-discharge, up to 6 months without charging it on shelf, no memory effect, excellent performance of shallow charge and discharge.
- ◎ Multi-functional LED intelligent digital screen display

Product Parameters

| Model | PTIPL-I 6KW 16kWh | PTIPL-U 10KW 16kWh | PTIPL-E 10KW 16kWh |
|------------------------------|-------------------------|--------------------|--------------------|
| Battery parameters | | | |
| Module model | 51.2V 314Ah | 51.2V 314Ah | 51.2V 314Ah |
| Battery type | Lifepo4 | Lifepo4 | Lifepo4 |
| Nominal capacity | 16kWh | 16kWh | 16kWh |
| Nominal voltage | 51.2V | 51.2V | 51.2V |
| Working voltage | 43.2-58.4V | 43.2-58.4V | 43.2-58.4V |
| PV input | | | |
| PVarray mppt voltage range | 12-30V/30V-150V | 120V-500V | 120V-500V |
| Maximum solar charge Current | 10A/30A | 200A | 200A |
| AC input | | | |
| Voltage | 120VAC/240VAC | 120VAC | 220VAC |
| AC input current | 15A/10A | 160A | 160A |
| AC output | | | |
| AC output | 120V20A/120V30A/240V30A | 120V 83.3A | 220V 55.4A |
| DC output | | | |
| DC output | 12V30A/5521x2(12V10A) | / | / |
| Type-c | PD 100Wx1/ 30Wx1 | / | / |
| USB | QC3.0 | / | / |
| Overall parameters | | | |
| Communication | RS485,WIFI,RS232 | RS485,BT,RS232 | RS485,BT,RS232 |
| Storage temperature | -20°C~55°C | -20°C~55°C | -20°C~55°C |
| Working humidity | <95%(RH) | <95%(RH) | <95%(RH) |
| Working temperature | -10°C~40°C | -10°C~40°C | -10°C~40°C |
| Working altitude | ≤200m | <2000m | <2000m |
| Cooling method | fan | fan | fan |
| Protective class | IP20 | IP20 | IP20 |
| Weight | 145kg | 145kg | 145kg |
| Dimension | 710*550*500mm | 710*550*500mm | 710*550*500mm |
| Design life | 10 years(25°C) | 10 years(25°C) | 10 years(25°C) |
| Cycle life | >6000(25°C),80%DOD | >6000(25°C),80%DOD | >6000(25°C),80%DOD |



Product Introduction

PTIPS portable energy storage power station has a built-in inverter, which can output sine wave AC power similar to household electricity, and can provide emergency power for electrical appliances. It has multiple DC voltage outputs (5V/9V/12V/15V/20V) that are compatible with different ports such as USB, TYPE-C, DC5521, cigarette lighter, etc. It is also equipped with LED lighting, which can display the real-time status and output power of the battery through the display screen.

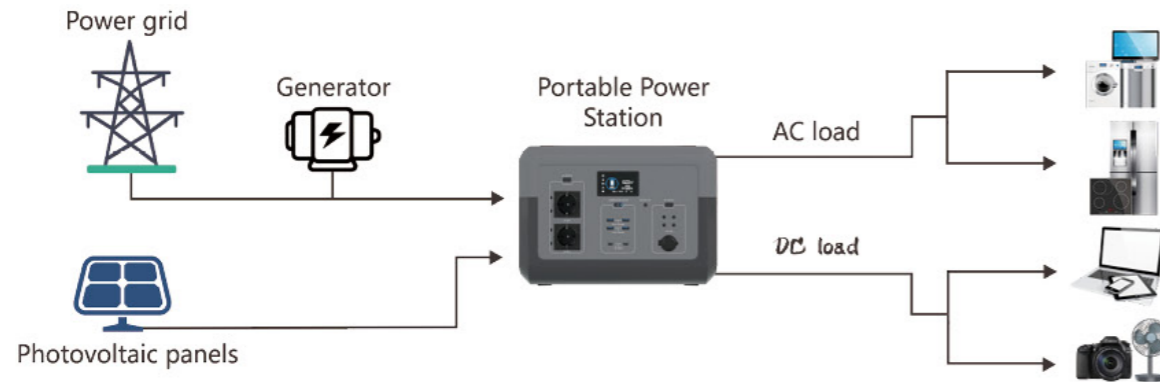
Product features

- ⊙ 110v/220vac output customizable
- ⊙ 3000 cycles of A-grade LiFePO4 cell
- ⊙ Pure sine wave output
- ⊙ Multi level emergency lighting
- ⊙ Solar/mains charging
- ⊙ Lithium iron phosphate battery pack
- ⊙ USB/TYPE-C/DC5521/Cigar lighter DC output

PTIPS Portable Power Station 300W-3000W



Product Connection Diagram



Product Parameters

| Model | PTIPS-300 | PTIPS-500 | PTIPS-600 | PTIPS-1500 | PTIPS-2400 | PTIPS-3000 |
|--|--|--------------------------------|-----------------------------|---|--|-----------------------------|
| Rated power | 300W | 500W | 600W | 1500W | 2400W | 3000W |
| Peak power | 600W | 1000W | 1200W | 3000W | 4800W | 6000W |
| Rated capacity | 192Wh/320Wh Optional | 480Wh | 512Wh | 1024WhWh | 2560Wh | 2560Wh |
| Battery pack parameter | 20Ah,12.8V | 25Ah,19.2V | 25Ah,22.4V | 25Ah,51.2V | 50Ah,51.2V | 50Ah,51.2V |
| Battery brand and type | GradeA LiFePO4 Battery(3000 Cycles) | | | | | |
| Communication output | 100v,110v120v,220v,or230V5%(voltageadjustable) | | | | | |
| Output waveform | Pure Sine Wave | | | | | |
| USB output | 2*USBA output:QC18W | 2*USBA output:QC18W | 2*USBA output:QC18W | USB-A1+USB-A2 output:QC18W USB-A3+USB-A4 output:OC18W | | |
| Type-C1 output | PD30W | PD24W | PD30W | PD 100W | | |
| Type-C2 output | PD60W | PD100W | PD100W | PD 100W | | |
| Cigarette lighter/2 * DC5521 output | 12V/10A | 12V/10A | 12V/10A | / | / | / |
| Cigarette lighter/4 * DC5521 output | / | / | / | 12V/10A | 12V/10A | 12V/10A |
| Solar panel/DC5521 charging | 10.8V-23V,3A (Maximum60w) | 10.8V-23V,5A (Maximum100w) | 12-60V,12A (Maximum240W) | 10-60V,13A (Maximum440W) | 10-60V,13A (Maximum440W) | 10-60V,13A (Maximum440W) |
| AC charging | 60W(Charging with adapter) | 100W(Charging with adapter) | (Maximum500w) | 90-246V (Maximum1200w) | 90-264V (US/Japanese: maximum 1600w; Chinese/European: maximum 200ow) | |
| Charging temperature | 0-40°C(32-104°F) | | | | | |
| Discharge temperature | -10-45°C(14-113°F) | | | | | |
| Product size (mm) | 240*185*138 | 254*200*182 | 254*200*182 | 374*265*263 | 374*265*349 | 403*300*435 |
| Package size (mm) | 560*448*240 | 510*310*300 | 510*310*300 | 472*368*355 | 470*360*440 | 546*446*640 |
| NW./PCS (kg) | 3.9 | 6.5 | 6.5 | 18 | 26 | 45 |
| GW./Ctn (kg) | 22 (4 sets per box) | 16.5 (2 sets per box) | 16.5 (2 sets per box) | 20 (1 sets per box) | 29 (1 sets per box) | 60 (1 sets per box) |
| Describe | Grade A LiFePO4 Battery | | | UPS/Bidirectional inverter/With WIFI and Bluetooth/ Voltage adjustable/Grade A LiFePO4 Battery | | |
| Packaging method | Carton | | | | | |
| Warranty | 1 year | | | | | |

PTIPI Portable Power Station 3000W



Product Introduction

PTIPI portable energy storage power station has a built-in inverter, which can output sine wave AC power similar to household electricity, and can provide emergency power for electrical appliances. It also equipped with LED lighting, which can display the real-time status and output power of the battery through the display screen.

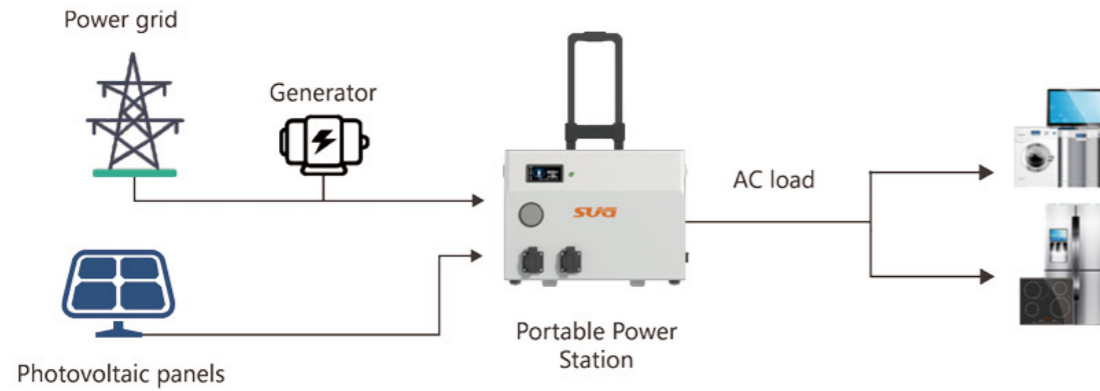
Product features

- ◎ 110v/220vac output customizable
- ◎ 3000 cycles of A-grade LiFePO4 cell
- ◎ Pure sine wave output
- ◎ Multi level emergency lighting
- ◎ Solar/mains charging
- ◎ Lithium iron phosphate battery pack

PTIPI Portable Power Station 3000W



Product Connection Diagram



Product Parameters

| Model | PTIPI-3000w/2.5kWh |
|---------------------|-------------------------------------|
| Battery Voltage | 25.6V |
| Rated Capacity | 2.56kWh |
| AC Output Voltage | 220-240VAC(setup)/50Hz or 60HZ |
| AC Output Power | 230V/10A/230V/10A Industrial Socket |
| AC Input Voltage | 220-240VAC(setup)/50Hz or 60Hz |
| AC Input Current | 12A |
| AC Input Voltage | 30-128V(optioual) |
| AC Input Current | 60A |
| LED lighting | 3W |
| Working Temperature | 0-50°C |
| Storage Temperature | -20-55°C |
| Environment | 80% |
| IP Degree | IP20 |
| Size (mm) | 466*390*422(990) |
| Weight (kg) | 40 |
| Cooling way | fans cooling |
| Design life | 10 years |

PTIPY All-in-One Balcony Solar Power System



Number of battery modules:51.2V 40Ah



Product Introduction

PTIPY All-in-One machine, which is used in Balcony solar power system. It is a micro solar power generation system integrating batteries and PV control modules comprised of a battery section and a PV control section, it forms a complete set of balcony PV energy storage system in conjunction with PV modules, micro-inverters, smart electricity meters, and the power grid. This product can efficiently store the direct current generated by solar panels in the storage battery and connect to the electrical loads and the power grid through the micro-inverter, providing people with green electric energy while effectively addressing the key technical challenges such as the usability, safety, and service life of the PV energy storage system.

Product features

- ◎ Grade A LiFePO4 cell
- ◎ Wi-Fi communication control
- ◎ Parallel support for 3PCS
- ◎ 6000 cycles @ DOD80%
- ◎ Convenient to move and freely combine
- ◎ Power quantification

PTIPY All-in-One Balcony Solar Power System

Number of battery modules: 51.2V 40Ah



Application Area

- Energy storage system, control system, alarm system, power system, database
- Emergency lighting system, emergency power supply, UPS
- Telecommunications, communication, and fire protection

Product Parameters

| Battery | |
|--|---|
| Battery type | LiFePO4 |
| Rated voltage | 51.2V(16S) |
| Battery capacity | 2.048kWh |
| Cycle life | 6000(25°C) |
| Discharge depth | 90% |
| Maximum charging current | 60A |
| DC input (PV input) | |
| Maximum input power | 800Wx2 max |
| Mppt voltage range | 18V-60V |
| Start-up voltage | 12V |
| Operating voltage range | 12V-60V |
| Input conversion efficiency) | 98% Max |
| Maximum input voltage | 60V |
| Maximum input current per channel | 25A |
| Maximum input short-circuit protection current (transient) per channel | 90A |
| Number of MPPT tracking | 2 |
| MPPT tracking efficiency | 99% |
| DC output (INV output) | |
| Maximum output power | 800Wx2 Max |
| Output conversion efficiency | 98% Max |
| Operating voltage range | 18V-55V |
| Maximum output voltage | 55V |
| Maximum output current per channel | 28 |
| Maximum input short-circuit protection current (transient) per channel | 90A |
| General parameters | |
| Product dimensions | Control module (with battery):480x230x275mm Battery: 480x230x230mm |
| Packaging dimensions | 520mmx270mmx310mm |
| Net weight | 20kg |
| Maximum number of external parallel slave battery packs | 3 PCS |
| Capacity of a single slave battery pack | 2.048kWh |
| Charging operating temperature | 0°C-55°C |
| Discharging operating temperature | -20°C-60°C |
| Protection grade | IP65 |
| Communication mode | WIFI |
| Heat dissipation mode | natural cooling |

PTPM SOC Power Manager



Product Introduction

PTPM SOC power manager is a device to manage the output load of inverter through several different routes, the power manager works with SUG lithium battery, it can on/off the certain routes of AC output basing on specific SOC of the lithium battery.

Product Parameters

| Item | Route 1 | Route 2 | Route 3 |
|--------------------------------|-----------------------|---------|---------|
| AC Input | | | |
| Max input power | 10kW | | |
| Frequency | 50/60Hz | | |
| Input voltage | 220VAC+10% | | |
| AC Output | | | |
| Max power in total | 10kW | | |
| Disconnect SOC (default value) | 40% | 20% | 10% |
| Reconnect SOC default value | 60% | 40% | 30% |
| Settable SOC range | 0%-99% settable | | |
| Output voltage | 220VAC ± 3% | | |
| Others | | | |
| Protection | Overload, low voltage | | |
| Communication | CAN | | |
| Other optional | Bluetooth/Wifi(TBD) | | |

PTBP Industrial & Commercial High Voltage Storage System

30kW+60kWh/50kW+100kWh/100kW+215kWh



BMS protection



High power output



Industrial and commercial energy storage



Intelligent communication

Product function

- ◎ This energy storage cabinet is 60-215kWh class system, using fan/air-conditioner/liquid cooled lithium iron phosphate battery pack.
- ◎ Two-layer BMS battery management system, a comprehensive digital LCD display, you can easily view and manage on the spot.
- ◎ Industrial and commercial enterprises, data centers, industrial parks, commercial buildings, large industries, mobile device energy storage, platform expansion, power quality management, etc.
- ◎ This storage cabinet is equipped with a 30/50/100kW hybrid inverter, a multifunctional inverter that combines solar charge grid charger and battery support.
- ◎ The energy storage cabinet is designed in the form of outdoor cabinet, with IP54 protection grade and highly integrated design.
- ◎ The cabinet is integrated with auxiliary components such as air-conditioner, liquid cooling system, lighting, power distribution, fire fighting, and environmental event disposal as optional.

Application scenario

- ◎ Industrial and commercial enterprises, data centers, industrial parks
- ◎ Commercial buildings, large industries, mobile device energy storage
- ◎ Platform expansion, power quality management, etc

PTBP Industrial & Commercial High Voltage Storage System

30kW+60kWh/50kW+100kWh/100kW+215kWh

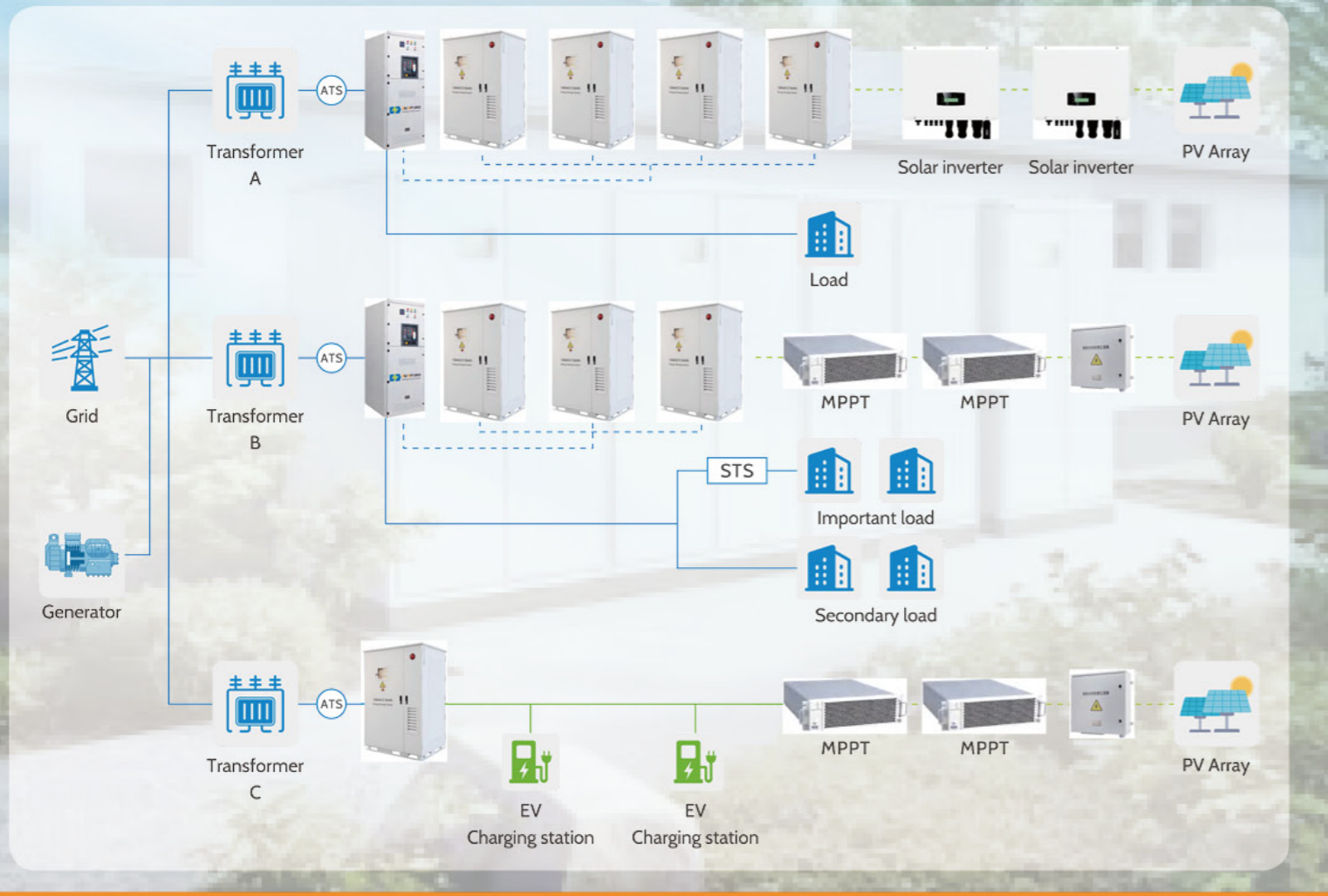


Product Parameters

| Model | PTBP-30000 | PTBP-50000 | PTBP-100000 |
|--|--|--------------------------|-------------------------|
| AC Output Specification | | | |
| Rated AC Input/ Output Active Power(W) | 30000W | 50000W | 100000W |
| Peak Power(off grid) | 1.5 time of rated power,10S | | |
| AC Output Rated Current(A) | 45.6A | 75.8A | 151.6A |
| Max.AC Current(A) | 60A | 83.3A | 166.6A |
| Output Frequency and Voltage | 50/60Hz:3 L/N/PE 220/380,230/400Vac | | |
| Grid Type | Three Phase | | |
| Total Harmonic Distortion(THD) | <3% (of nominal power) | | |
| PV Input Specification | | | |
| Max. PV Input Power(W) | 39000W | 65000W | 100000W |
| Max. PV Input Voltage (V) | 1000V | | 650V |
| MPPT Range(V) | 150-850V | | 260-650V |
| Start-up Voltage(V) | 260V | | |
| Full Load MPPT Voltage Range(V) | 360-850V | 450-850V | 500-650V |
| Rated PV Input Voltage (V) | 600V | | |
| PV Input Current(A) | 36+36+36 | 600V | 50A+50A+50A+50A |
| Max.PV Isc(A) | 55+55+55 | 36+36+36+36 | 60A+60A+60A+60A |
| No.of MPPT Trackers | 3 | 55+55+55+55 | 4 |
| No.of Strings per MPPT Tracker | 2 | | 1 |
| Battery Specification | | | |
| Spec Of Each Module | LFP102.4V100AH 10.24kWh | LFP 51.2V 200AH 10.24kWh | LFP 51.2V 280Ah 14.3kWh |
| Module Number | 6 | 10 | 15 |
| Battery System Capacity | 61.44kWh | 102.4kWh | 215kWh |
| Battery Voltage Range | 537.6V-691.2V | 432V-576V | 600V-876V |
| Basic Parameter | | | |
| Product size (mm) | 1170*1031*1635mm | 1320*1131*1873mm | 1635*1200*2266mm |
| Package size(mm) | 1280*1140*1800mm | 1430*1240*2040mm | 1700*1250*2356mm |
| NW. (Kg) | 900kg | 1280kg | 2620kg |
| GW.(kg) | 1130kg | 1530kg | 2635kg |
| Cooling Mode | Fan cooling, Air-conditioner cooling and Liquid cooling optional | | |
| Class Of Protection | IP54 | | |

Grid Based System Solution

Gird+ Solar+ ESS+



Firstier brand, Quality assurance, Safety & reliability | **EVE** | **KRODER** | **Elvicoot**

Flexible deployment, Parallel expansion, Independent operation on/off grid

Smart energy management, Refined management of all batteries

Active and passive dual fire warning, PACK & Full container fire protection

PV, ESS, Generator and mains power strategy fully automatic intelligent operation

The grid construction system can connect different power generation equipment, ESS equipment, PV equipment, and load equipment to meet the needs of isolated island PV storage projects, microgrids and various electrical energy projects. The grid construction system can effectively improve the short-circuit capacity and lack of rotational inertia of the power system. The system mainly consists of industrial and commercial energy storage systems, solar inverters/MPPT modules, intelligent control cabinets, STS, EMS, and electrical safety auxiliary systems.

Diversified applications in urban power distribution, desert power stations, microgrids, charging stations, emergency backup power stations, communication base stations, and other projects.

Grid Based System Solution

Gird+ Solar+ ESS+



| Energy storage system parameters | Standard single device | MAX. system configuration |
|--|--|---------------------------|
| ESS specifications | 100kW/215kWh | 2.5MW/5MWh |
| ESS Battery DC voltage | 768VDC | 1331.2VDC |
| ESS Battery voltage range | 636-846VDC | 1040-1500VDC |
| Cell type | LFP 3.2V/280Ah | LFP 3.2V/314Ah |
| Single PACK configuration | 51.2V280Ah/1P16S | 332.8V314Ah/1P104S |
| Number of system PACKs | 15PCS | 48PCS |
| Total system power consumption | 240S1P/215kWh | 416S12P/5015.9kWh |
| PCS Power | 100kW | 5PCS*500kW |
| Charge discharge rate | ≥0.5C | |
| Discharge depth & Battery life | 90%DOD>6000Times(0.5C@25°C)Energy retention rate>80% | |
| Thermal management method | Intelligent air cooling | |
| Fire Protection Plan | PACK aerosol /Cabinet aerosol+Perfluorohexane | |
| Communication method | CAN/Eth/RS485(4G Optional) | |
| Operating mode | On/off grid | |
| Photovoltaic parameters(photovoltaic inverters or MPPT modules) | | |
| MAX. input power of PV | 100kW | |
| MPPT voltage range | 200-1000v DC | |
| MAX.PV access voltage | 1100vDC | |
| Rated input voltage | 620VDC | |
| Open circuit voltage | 200vDC | |
| PV access | 6/12 Ways | |
| PV input current | 6*38A | |
| AC Side parameters | | |
| Rated power | 100-2500kW | |
| Rated grid voltage | 380VAC | |
| Rated grid frequency | 50/60Hz±5Hz | |
| Access method | Communication bottom inlet/3phase/3L+N+PE | |
| System usage parameters | | |
| Temperature for use | 0°C-+50°C | |
| Environmental humidity for use | 0-95%CCRH | |
| Storage temperature | -20°C-+60°C | |
| Working altitude | 2000m (>2000m Reduced usage) | |

PTBP Industrial & Commercial High Voltage Storage System

30kW+60kWh/50kW+100kWh/100kW+215kWh



PTBP Industrial & Commercial High Voltage Storage System

30kW+60kWh/50kW+100kWh/100kW+215kWh



| System specifications | 20kW/51.2kWh | 30kW/61.44kWh | 50kW/107kWh |
|--------------------------------|---|----------------------|----------------------|
| System battery DC voltage | 512v | 614V | 716V |
| Battery voltage range | 432-576VDC | 490-690VDC | 582-806VDC |
| Cell type | LFP 3.2V/100Ah | LFP 3.2V/100Ah | LFP 3.2V/150Ah |
| Single PACK configuration | 102.4V100Ah/10.24kWh | 102.4V100Ah/10.24kWh | 102.4V150Ah/15.36kWh |
| Number of system PACKs | 5PCS | 6PCS | 7PCS |
| Total system capacity | 51.2kWh | 61.44kWh | 107kWh |
| Rated power of inverter | 20kw | 30kW | 50kW |
| MAX. PV input power | 26kW | 39kW | 65kW |
| Charge discharge rate | ≥0.5C | >0.5C | >0.5C |
| Thermal management method | Intelligent air cooling | | |
| Discharge depth & Battery life | 90%6DOD>6000Times(0.5°C, 25°C)Energy retention rate>80% | | |
| Fire Protection Plan | PACK aerosol /Cabinet aerosol | | |
| Rated grid voltage | 380VAC (3L+N+PE) | | |
| Rated grid frequency | 50/60Hz±5Hz | | |
| Communication method | CAN/RS485/WiFi (4G Optional) | | |
| Operating mode | On/off grid | | |
| Access method | Communication bottom inlet/3 phase/3L+N+PE | | |
| Temperature for use | 0°C-+50°C | | |
| Environmental humidity for use | 0-95%RH | | |
| storage temperature | -20°C-+60°C | | |
| Working altitude | 2000m(>2000m Reduced usage) | | |
| protection grade | IP54 | | |
| Product size | 1100*1260*1525mm | 1100*1260*1725mm | 1255*1445*1960mm |
| Product weight | 1100kg | 1250kg | 2100kg |

Firstier brand, Quality assurance, Safety & reliability | **EVE** **KRODER** **Elvicoot**

Flexible deployment, Parallel expansion, Independent operation on/off grid

Smart energy management, Refined management of all batteries

Active and passive dual fire warning, PACK & Full container fire protection

PV, ESS, Generator and mains power strategy fully automatic intelligent operation

PV&ESS All in one system is an integrated PV storage device designed to meet the needs of ESS and PV storage distribution. The equipment has energy-saving, high energy density, fast access to and/or off grid photovoltaics, strong environmental adaptability, small space occupation, and particularly outstanding performance in distribution and storage. The integrated light storage machine consists of a cabinet, air-cooled air conditioning, inverter, BMS, Battery cluster, inverter, transformer, and other electrical accessories. It is suitable for various industrial storage projects and off-grid integrated projects.

Air Cooled Energy Storage System



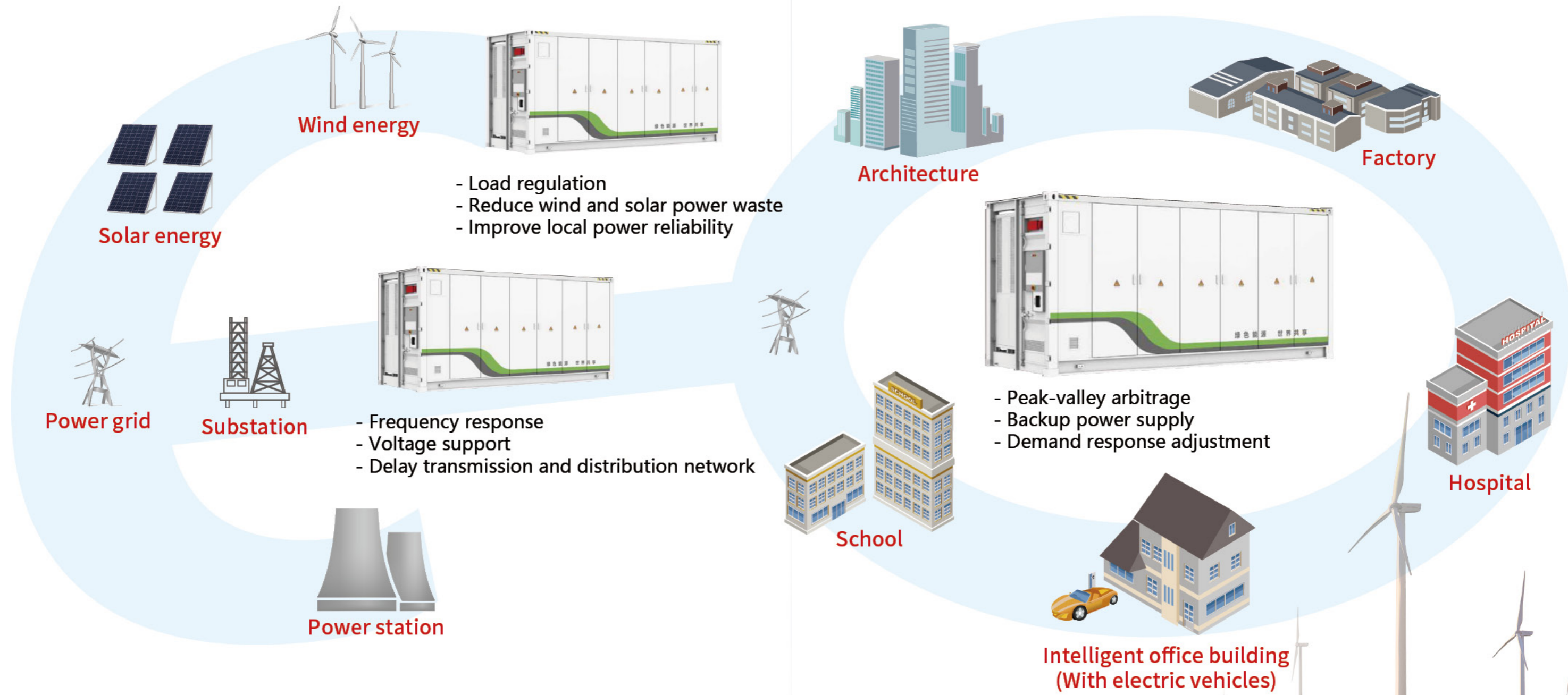
- Flexible deployment, Parallel expansion, independent operation on/off grid
- Smart energy management, Refined management of all batteries
- Active and passive dual fire warning, PACK & Full container fire protection
- PV, ESS, and mains power strategy fully automatic intelligent operation

The integrated system solution meets the requirements of photovoltaic distribution and storage, grid connected / off grid photovoltaic storage, and other different projects. Featuring high efficiency and energy conservation, high energy density, and small installation space, it is composed of industrial and commercial energy storage systems, inverters, intelligent control cabinets, EMS, and electrical safety auxiliary systems.

Air Cooled Energy Storage System



| | |
|--------------------------------|---|
| ESS specifications | 100kW/215kWh |
| ESS Battery DC voltage | 768VDC |
| ESS Battery voltage range | 636-846VDC |
| CEll type | LFP 3.2V/280Ah |
| Single PACK configuration | 51.2V280Ah/1P16S |
| Number of system PACKs | 15PCS |
| Total system power consumption | 240S1P/215kWh |
| PCS power | 100kW |
| Charge discharge rate | >0.5C |
| Discharge depth & Battery life | 90%DOD>6000 Times(0.5C@25°C)Energy retention rate>80% |
| Thermal management method | Intel ligent air cooling |
| Fire Protection Plan | PACK aerosol/Cabinet aerosol+Perfluorohexane |
| Communication method | CAN/Eth/RS485(4G Optional) |
| Operating mode | On/off grid |
| Rated power | 100kW |
| Rated grid voltage | 380VAC |
| Rated grid frequency | 50/60Hz±5Hz |
| Access method | Communication bottom inlet/3phase/3L+N+PE |
| NO.of grid connected ESS | 15 PCS |
| Temperature for use | 0°C-+50°C |
| Environmental humidity for use | 0-95%CRH |
| Storage temperature | -20°C-+60°C |
| Working altitude | 2000m (>2000m Reduced usage) |
| Protection grade | IP54 |
| Product size | 1550*1295*2186mm |
| Product weight | 2800kg |



PTSES-5015kWh

Prominent Power 5MWh Liquid-Cooled Battery Container high yield over life cycle



Product Features

- ◎ 5 MWh system in a 20-ft standard container design; compared with products of the same scale, the system energy density is increased by 35%.
- ◎ Compatible with 28C - 345 Ah battery cells.
- ◎ Patented borderless liquid cooling plate design, improving pack assembly efficiency by 6.7%.
- ◎ Low flow resistance, high flow rate, narrow range, pack temperature difference <1.5C
- ◎ Pack-level small particle cooling control, system temperature difference <2°C
- ◎ New insulation thermal design improves heat exchange efficiency by 10%
- ◎ 5700 V full-system insulation with 12 levels of electrical protection.
- ◎ Five-category risk management framework with patented operational control strategy.
- ◎ Zone 4 seismic rating with 43-ton full-load lifting capability.
- ◎ Dual fire suppression system (water & gas) with pack-level fire protection

PTSES-5015kWh

Prominent Power 5MWh Liquid-Cooled Battery Container high yield over life cycle

| | |
|-------------------------------------|---|
| Systematic name | CPS ES-5015KWH |
| Battery parameters | |
| Cell type | LFP 314Ah |
| System battery configuration | 1P416S |
| Battery capacity | 5016kWh |
| Rated voltage | 1331.2V |
| Voltage range | 1164.8~1497.6V |
| System parameter | |
| Levels of protection | IP54 |
| Cooling-down method | Liquid cooling |
| Extinguishing and protection | Temperature and smoke detectors, combustible gas detectors, aerosols, perfluorohexanone, water-based fire extinguishing options available |
| Temperature range | -25°C~50°C |
| Highest altitude | ≤2000m |
| Humidity range | 0~95% No condensation |
| Dimensions (length × width × depth) | 6058x2896x2438mm |
| Weight | 43T |
| Communication interface | RS485/Ethernet/CAN |
| Protocol | Modbus RTU/Modbus TCP/CAN |
| Accessory power supply | 3P+N 400Vac/50kVA |