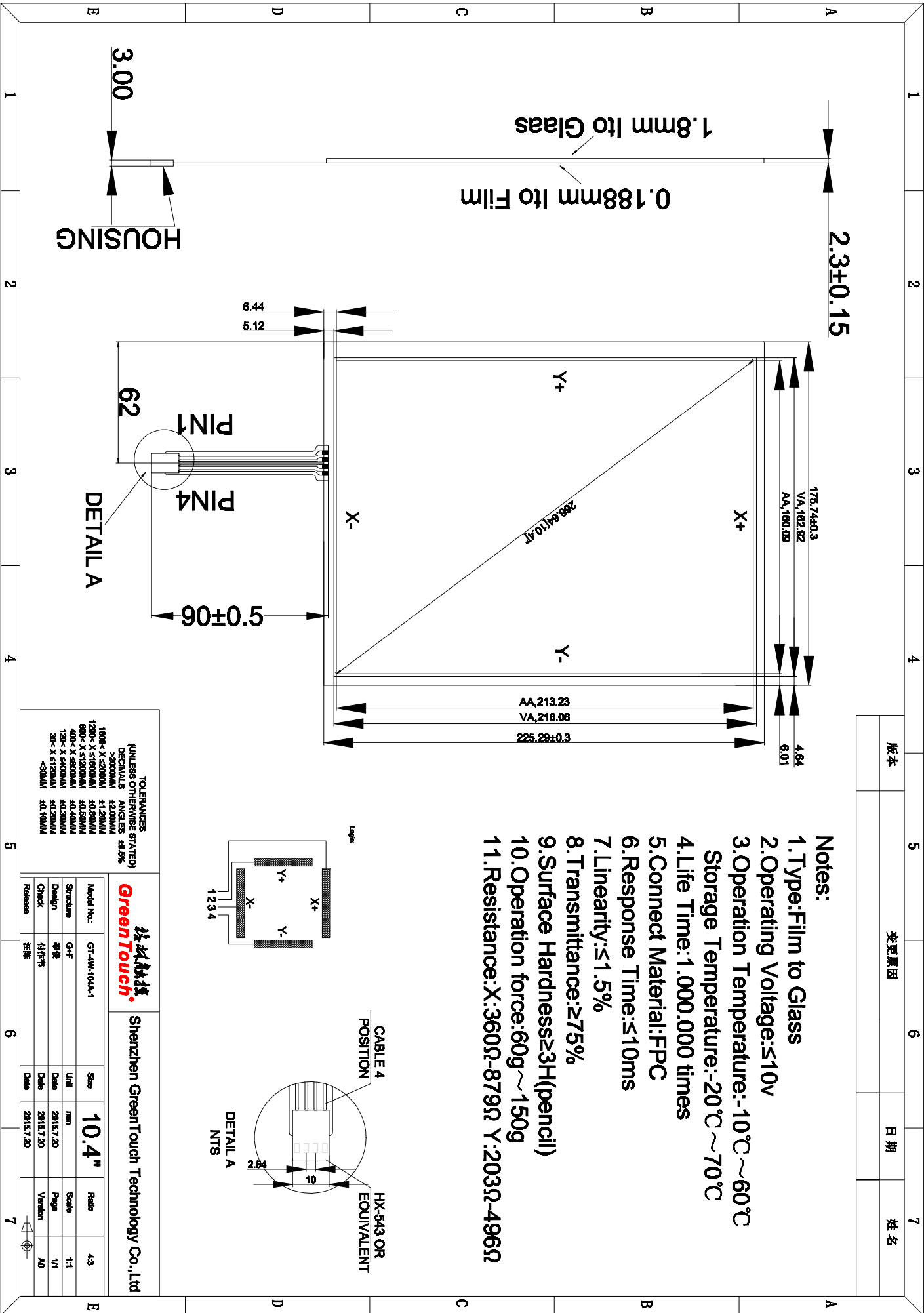


版本	变更原因	日期	姓名

Notes:

- 1.Type:Film to Glass
- 2.Operating Voltage: $\leq 10V$
- 3.Operation Temperature: $-10^{\circ}C \sim 60^{\circ}C$
Storage Temperature: $-20^{\circ}C \sim 70^{\circ}C$
- 4.Life Time:1,000,000 times
- 5.Connect Material:FPC
- 6.Response Time: $\leq 10ms$
- 7.Linearity: $\leq 1.5\%$
- 8.T transmittance: $\geq 75\%$
- 9.Surface Hardness: $\geq 3H$ (pencil)
- 10.Operation force: $60g \sim 150g$
- 11.Resistance:X: $360\Omega-879\Omega$ Y: $203\Omega-496\Omega$



格林触控
GreenTouch

Shenzhen GreenTouch Technology Co., Ltd

Model No.:	Size	Ratio
GT-1W-104A-1	10.4"	4:3
Structure	Unit	Scale
GF	mm	1:1
Design	Date	Page
李俊	2015.7.20	1/1
Check	Date	Version
付作伟	2015.7.20	A0
Release	Date	
汪雅	2015.7.20	

TOLERANCES (UNLESS OTHERWISE STATED)

DECIMALS	ANGLES
>0.000MM	±0.5°
1600< X ≤2000MM	±1.20MM
800< X ≤1600MM	±0.80MM
400< X ≤800MM	±0.50MM
120< X ≤400MM	±0.30MM
30< X ≤120MM	±0.20MM
<30MM	±0.10MM